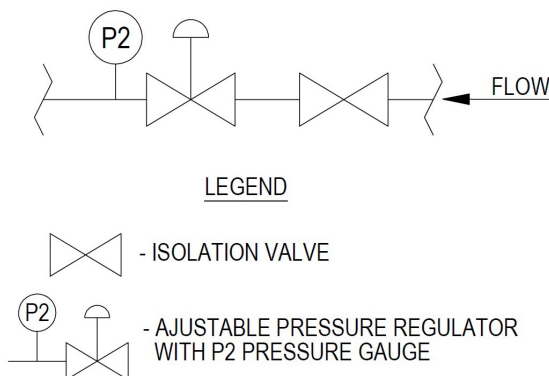


Process & Instrumentation Drawing



Specification

The Chem-Master Integrated Outlet Point is designed to be fully compatible with all types of laboratory and laboratory furniture applications. The product is designed for corrosive and toxic gases upto grade N6.0 purity (99.9999). Gas-Arc offer two additional mounting options for this product , one is designed for high level service gantry and standard surface bench mounting, the other offers a simple solution for laboratory furniture and fume cupboard integration.

Product Features

- Stainless steel point of use regulators with integrated isolation valve.
- Low wetted surface area for minimal purging.
- Wall, bench, gantry, fume cupboard and laboratory furniture mounting options.
- Clean room assembled.
- 100% Helium leak tested.
- Vacuum packed.
- Designed and manufactured in the UK.

Technical Data

| | |
|------------------------------|-------------------------------|
| Type | Single-stage |
| Inlet Pressure | maximum 40 bar |
| Outlet Pressure | 0-1.5, 0-3.5, 0-10, 0-20 bar |
| Materials: | |
| Body: Regulator & Valve | 316L Stainless steel |
| Valve seat: Regulator | PCTFE |
| Diaphragm: Regulator & Valve | 316L stainless steel |
| Seals: | FFKM |
| Filter: Regulator | sintered 316L Stainless steel |
| Inlet Port | 1/4 NPT female |
| Outlet Port | 1/4 NPT female |
| Helium Leak Integrity | 1x10 ⁻⁹ mbar l/s |
| Gas purity | grade 6.0 (99.9999%) |
| Temperature range | -20° C to +60° C |

LIT001131 Issue: A Revision: 1