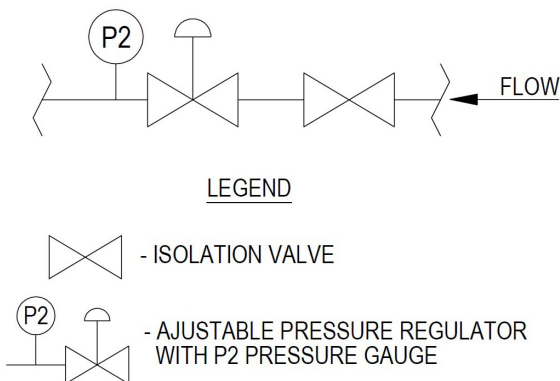


Process & Instrumentation Drawing



LIT001130 Issue: A Revision: 1

Specification

The Spec-Master Integrated Outlet Point is designed to be fully compatible with all types of laboratory and laboratory furniture applications. The product is designed for non-corrosive and non-toxic gases upto grade N6.0 purity (99.9999). Gas-Arc offer two additional mounting options for this product , one is designed for high level service gantry and standard surface bench mounting, the other offers a simple solution for laboratory furniture and fume cupboard integration.

Product Features

- Nickel plated brass point of use regulators with integrated isolation valve.
- Low wetted surface area for minimal purging.
- Wall, bench, gantry, fume cupboard and laboratory furniture mounting options.
- Clean room assembled.
- 100% Helium leak tested.
- Vacuum packed.
- Designed and manufactured in the UK.

Technical Data

Type	Single-stage
Inlet Pressure	maximum 40 bar
Outlet Pressure	0-1.5, 0-3.5, 0-10, 0-20 bar
Materials:	
Body: Regulator & Valve	Nickel plated brass
Valve seat: Regulator	PCTFE
Diaphragm: Regulator & Valve	316L stainless steel
Seals:	FFKM
Filter: Regulator	sintered 316L Stainless steel
Inlet Port	1/4 NPT female
Outlet Port	1/4 NPT female
Helium Leak Integrity	1x10 ⁻⁹ mbar l/s
Gas purity	grade 6.0 (99.9999%)
Temperature range	-20° C to +60° C