

# Acetylene Manual Changeover Multi-Cylinder Pack Manifold

## Tech-Master



### Specifications

Designed for use on systems using compressed gases up to grade 4.8 purity, the Tech-Master range of automatic changeover cylinder manifolds are designed and manufactured to comply with recognised standards including the requirements of BCGA Codes of Practice CP5.

The automatic changeover cylinder manifolds are manufactured to operate in conjunction with cylinders filled up to 25 bar and are ideally suited to the requirements of most applications where cylinder gases are used.

The standard manifolds are designed to accommodate 2 equal sized banks of cylinders with sizes ranging from 2 x 1 to 2 x 3 with one bank set as duty and the other bank set as reserve. The manifolds offer the user an uninterrupted gas supply with an alarm option to indicate the reserve cylinder bank has taken over.

### Features

- Wall mounted cylinder support rack
- High pressure flexible hoses to BS EN ISO 14113
- Cylinder contents gauges
- High pressure non-return valves
- High pressure purge/vent valves
- High pressure isolation valves
- Manifold outlet pressure regulator to BS EN ISO 7291
- Pipeline pressure relief valve with 15/22mm pipeline vent adaptor
- Low pressure purge/sample valve
- Line isolation valve
- Floor mounting kit available
- Designed and manufactured in UK
- Safety slam shut valve
- Flashback arrestor to BS EN 730-1
- Automatic quick action shut off valve

LIT01105 Issue: A Revision: 1

# Acetylene Manual Changeover Multi-Cylinder Pack Manifold

# Tech-Master

## Options

- Floor mounting is available in a floor mounting kit which is attached to the wall mounted manifold frame, offering the user the option of a free standing manifold.
- High pressure purge valves are available to ensure that gas purity is maintained during cylinder replacement.
- In line flashback arrestor available as an option on fuel gas and oxygen systems. This unit is incorporated within the pipeline pressure reduction package and is fully compliant with the requirements of BS EN ISO 730-1.
- Custom built sizes, a range of manifold sizes and configurations (e.g. back to back) are available on request.
- Contact alarm gauge to warn of changeover from duty to reserve back, when used in conjunction with Gas-Arc Audible and Visual Alarm Panel

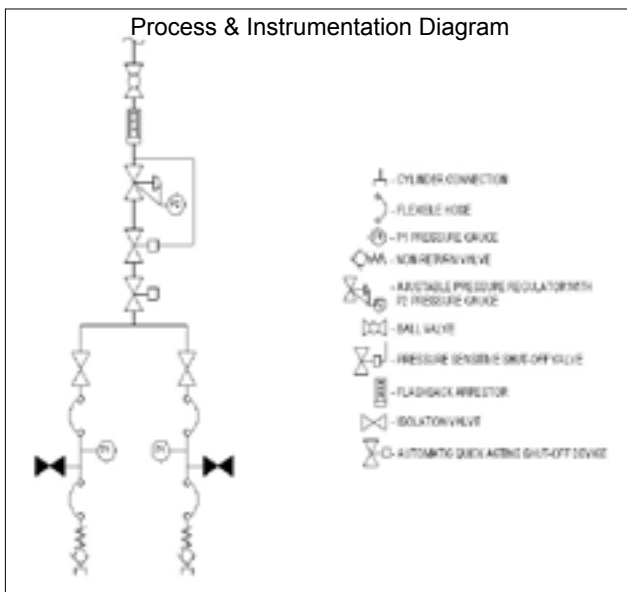
## Technical Data

Type: 2 x 1 cylinder to 2 x 3 cylinders  
 Inlet pressure: 25 bar maximum  
 Outlet pressure: 1.5 bar maximum  
 Inlet connection: BS341  
 Outlet connection: 1/2 BSP  
 Flowrates: Nominal discharge 10m<sup>3</sup>/hr @ 1.3 bar, as defined in BS EN ISO 7291. Higher flowrates will be achieved when cylinder contents are near maximum fill pressure.

Materials:  
 Body: Brass  
 Diaphragm: Neoprene  
 Valve Seat: Nylon  
 Filter: 316L Stainless Steel

Manifold Frame Max Width:		
2 x 1	930mm	
2 x 2	1480mm	
2 x 3	2080mm	
2 x 4	2680mm	
2 x 5	3280mm	
2 x 6	3880mm	

Temperature Range: -20°C to +60°C



LIT01105 Issue: A Revision: 1