



Specifications

Designed for use on systems using compressed gases up to grade 4.8 purity, the Tech-Master range of manual changeover multi-cylinder pack manifolds are designed and manufactured to comply with recognised standards including the requirements of BCGA Codes of Practice CP4.

The manual changeover multi-cylinder pack manifolds are manufactured to operate in conjunction with multi-cylinder packs filled up to 300 bar and are ideally suited to the requirements of most applications where large volumes of gases are used.

The standard manifolds are designed to accommodate 2 equal sized banks of multi-cylinder packs with sizes ranging from 2 x 1 to 2 x 3 with one bank set as duty and the other bank set as reserve. The manifolds offer the user a continuity of gas supply by means of simply open/closing of a manual HP isolation valve.

Features

- Wall mounted cylinder support rack
- High pressure flexible hoses to BS EN ISO 14113
- Cylinder contents gauges
- High pressure non-return valves
- High pressure purge/vent valves
- High pressure isolation valves
- Manifold outlet pressure regulator to BS EN ISO 7291
- Pipeline pressure relief valve with 15/22mm pipeline vent adaptor
- Low pressure purge/sample valve
- Line isolation valve
- Floor mounting kit available
- Designed and manufactured in UK.

LIT01100 Issue: A Revision: 1

Manual Changeover Multi-Cylinder Manifold

Tech-Master

Options

- Floor mounting is available in a floor mounting kit which is attached to the wall mounted manifold frame, offering the user the option of a free standing manifold.
- High pressure purge valves are available to ensure that gas purity is maintained during cylinder replacement.
- In line flashback arrestor available as an option on fuel gas and oxygen systems. This unit is incorporated within the pipeline pressure reduction package and is fully compliant with the requirements of BS EN ISO 730-1.
- Custom built sizes, a range of manifold sizes and configurations (e.g. back to back) are available on request.
- Contact alarm gauge to warn of changeover from duty to reserve bank, when used in conjunction with Gas-Arc Audible and Visual Alarm Panel

Technical Data

Type: 2 x 1 pack to 2 x 3 pack
 Inlet pressure: 300 bar maximum
 Outlet pressure: 0-5, 0-12, 0-35 bar
 Inlet connection: BS341
 Outlet connection: 15mm pipe stub (¼ NPT female on 0-35 bar unit)
 Flowrates: Nominal discharge 300 l/min @ 12 bar, as defined in BS EN ISO 7291.

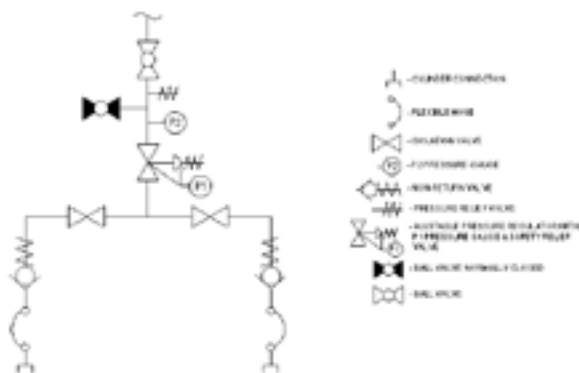
Materials:

Body: Brass
 Diaphragm: Neoprene
 Valve Seat: Nylon
 Filter: 316L Stainless Steel

Manifold Frame Max Width:	2 x 1	930mm
	2 x 2	1480mm
	2 x 3	2080mm
	2 x 4	2680mm
	2 x 5	3280mm
	2 x 6	3880mm

Temperature Range: -20°C to +60°C

Process & Instrumentation Diagram



LIT01100 Issue: A Revision: 1