



Specifications

Designed and manufactured to comply with recognised standards including the requirements of BCGA Codes of Practice CP4. The cylinder couplers are available in both single and twin cylinder versions and are ideally suited to most cylinder gas applications where space is at a premium or where financial constraints prevent the installation of a manifold system.

The cylinder couplers are mounted on a rigid stainless steel frame with the gas supplied via high pressure tailpipes into the centrally mounted regulator block which is fitted with high pressure isolation valves each side to provide easy duty or reserve bank selection. A 0-5 bar or 0-12 bar manifold regulator to BS EN ISO 7291, pipeline pressure relief valve, low pressure purge/sample valve, line isolation valve and pipeline connection offers a complete pressure control package whilst also ensuring ease of installation on site.

Features

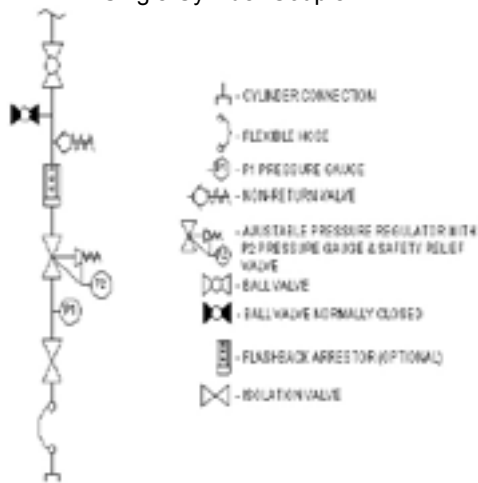
- Wall mounted cylinder support rack
- High pressure flexible hoses to BS EN ISO 14113
- Cylinder contents gauges
- High pressure non-return valves
- High pressure isolation valves
- Manifold outlet pressure regulator to BS EN ISO 7291
- Pipeline pressure relief valve with 15/22mm pipeline vent adaptor
- Low pressure purge/sample valve
- Line isolation valve
- Designed and manufactured in UK.

LIT01101 Issue: A Revision: 1

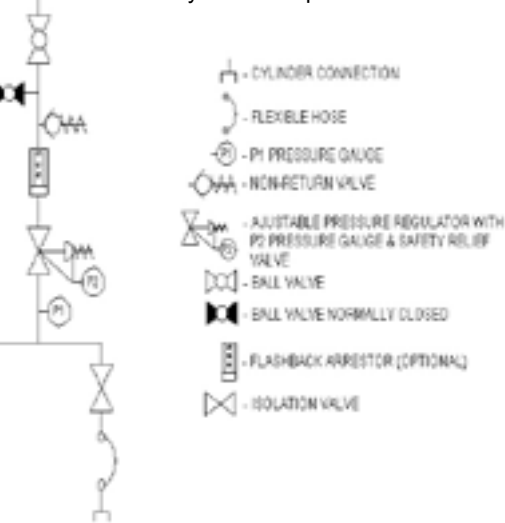
Options

- Floor mounting is available in a floor mounting kit which is attached to the wall mounted coupler frame, offering the user the option of a free standing manifold.
- High pressure purge valves are available to ensure that gas purity is maintained during cylinder replacement.
- In line flashback arrestor available as an option on fuel gas and oxygen systems. This unit is incorporated within the pipeline pressure reduction package and is fully compliant with the requirements of BS EN ISO 730-1.
- Custom built sizes, a range of manifold sizes and configurations (e.g. back to back) are available on request.
- Contact alarm gauge to warn of changeover from duty to reserve back, when used in conjunction with Gas-Arc Audible and Visual Alarm Panel
- High pressure purge/vent valves
- Floor mounting kit available

Process & Instrumentation Diagram
Single Cylinder Coupler



Process & Instrumentation Diagram
Twin Cylinder Coupler



Technical Data

Type: Single and twin cylinders
 Inlet pressure: 300 bar maximum
 Outlet pressure: 0-5, 0-12, 0-35 bar
 Inlet connection: BS341
 Outlet connection: 15mm pipe stub (¼ NPT female on 0-35 bar unit)
 Flowrates: Nominal discharge 300 l/min @ 12 bar, as defined in BS EN ISO 7291.

Materials:
 Body: Brass
 Diaphragm: Neoprene
 Valve Seat: Nylon
 Filter: 316L Stainless Steel

Manifold Frame Max Width: Single: 450mm
 Twin: 2 x 450mm

Temperature Range: -20°C to +60°C

LIT01101 Issue: A Revision: 1